

BENZ SOLIDFIX®

MODULAR QUICK CHANGE SYSTEM

Tooling & Machine tooling technology

Wood / Composites /
Aluminium machining



BENZ SOLIDFIX®

MODULAR QUICK CHANGE SYSTEM

1 angle head - 1000 processing possibilities

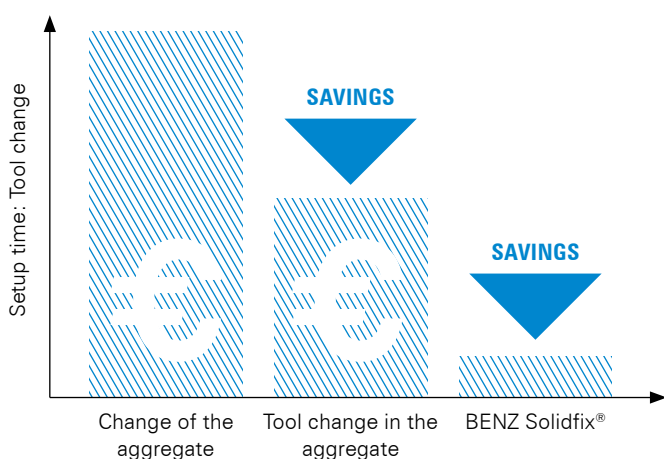
With the BENZ Solidfix® modular quick change system tool changes can be performed in less than 20 seconds. Avoid the complicated removal of angle heads from the machine by just changing preset tool adapters. By changing just the tool adapter you save various angle heads. Your benefit: Only one angle head instead of many and therefore less investment costs compared to changing the complete angle head!

BENZ Solidfix® can be used for various possibilities such as drilling, milling and sawing.



BENZ SOLIDFIX® – PERFORMANCE. PRECISION. HANDLING. SAFETY.

Savings through BENZ Solidfix®



System benefits

- **Modular design** via angle head and exchange unit with various tool holders
- **Minimize setup- and nonproductive time** via change of the pre-set tool within seconds
- **Much lower investment**, as the angle head stays on the machine and only the adapters are changed in total fewer angle heads are needed
- **Simple handling** by one-hand operation, without special tools
- **Operator safety** as tool cannot fall out



The pre-set adapter can be changed within seconds.

BENZ SOLIDFIX® TOOL CHANGE

In just a few steps

- **Make yourself familiar with the clamping mechanism**
To be able to change the adapter, the clamping mechanism must first be open (small picture 1)
- **Insert the adapter and turn it 90°**
- **Distance-controlled clamping to fix the adapter in place**
Turn the clamping screw until it stops (small picture 2)



BENZ Solidfix® – Tool change

Scan the QR code to the side with a smartphone and experience how easy it is to change tools with BENZ Solidfix®. You can also visit our YouTube channel to watch the video:

www.youtube.com/BENZWerkzeugsysteme



BENZ SOLIDFIX® SYSTEM DESIGN

DRILL/MILLING HOLDERS

TOOLS



Drill



End milling
cutter



Drill



End milling
cutter

DRILL/MILLING HOLDERS



**Collet chuck holder with
externally located clamp-
ing nut per DIN6499**
Clamping range
ER 25 \varnothing 2- \varnothing 16
ER 32 \varnothing 2- \varnothing 20



**Weldon holder per
DIN1835B**
Clamping range
 \varnothing 6 / \varnothing 8 / \varnothing 10 / \varnothing 12 /
 \varnothing 14 / \varnothing 16 / \varnothing 18 / \varnothing 20



EXCHANGEABLE UNIT



TOOL HOLDER
Presetting of tools is
possible

SAW BLADE HOLDERS

TOOLS



Saw blade



Saw blade



Saw blade

SAW BLADE HOLDERS



Arbor $\varnothing 30$ (TK $\varnothing 42-2x \varnothing 6$)
tool length 1,5-6 mm



Centring $\varnothing 30$
(TK $\varnothing 45 / \varnothing 52-4x M5$)



Centring $\varnothing 40$
(TK $\varnothing 52-8x M5$)



EXCHANGEABLE UNIT





TOOL HOLDER
Presetting of tools is possible



BENZ SOLIDFIX® ADAPTER ACCESSORIES

COLLET CHUCK HOLDER PER DIN6499




Order No.	Technical data		Fig.
	Size	Type	
693.130E534	S3	ER 25	1
B136-E5		ER 25	1
D01810B045050		ER 25	1




693.130E648	S3	ER 32	2
B136-E6		ER 32	2
D01810B045050		ER 32	2

SAW BLADE HOLDER




Order No.	Technical data		Fig.
	Size	Type	
693.040SD38	S3	Arbor Ø30 (TK Ø42-2x Ø6) tool length 1,5-6 mm	1
D01810B058062		Arbor Ø30 (TK Ø42-2x Ø6) tool length 1,5-6 mm	1



693.040S0001	S3	Centring Ø30 (TK Ø45/Ø52-4x M5)	2
811.00.235		Centring Ø30 (TK Ø45/Ø52-4x M5)	2



693.04040S0414	S3	Centring Ø40 (TK Ø52-8x M5)	3
811.00.235		Centring Ø40 (TK Ø52-8x M5)	3

WELDON HOLDER PER DIN1835B



Order No.	Technical data	
	Size	Type
693.1400606	S3	Ø 6
693.1400808	S3	Ø 8
693.1401028	S3	Ø 10
693.1401232	S3	Ø 12
693.1401432	S3	Ø 14
693.1401635	S3	Ø 16
693.1401842	S3	Ø 18
693.1402046	S3	Ø 20

SEALING PLUGS



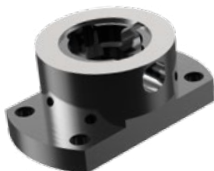
Order No.	Technical data	
	Size	
693.581S	S3	

BLANK



Order No.	Technical data	
	Ø	L
693.10250100	50	100

ASSEMBLY BLOCK



Order No.	Technical data	
	Size	
B300-4-S3	S3	

BENZ GmbH Werkzeugsysteme

Im Mühlegrün 12
D-77716 Haslach
T +49 7832 704-0
F +49 7832 704-8001
info@benz-tools.de
www.benz-tools.de

